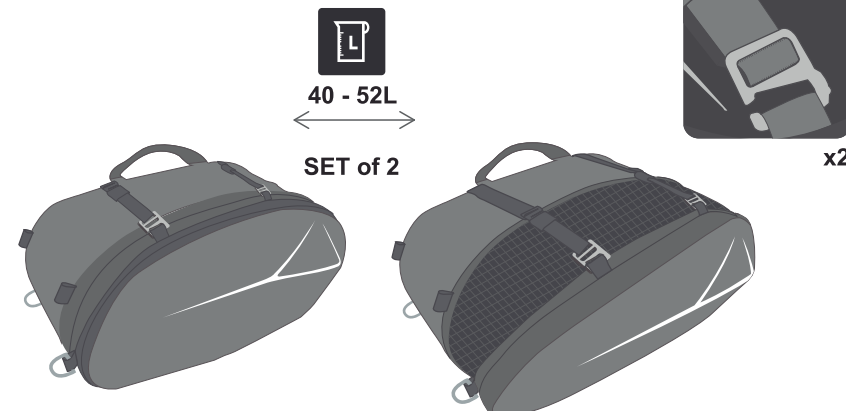
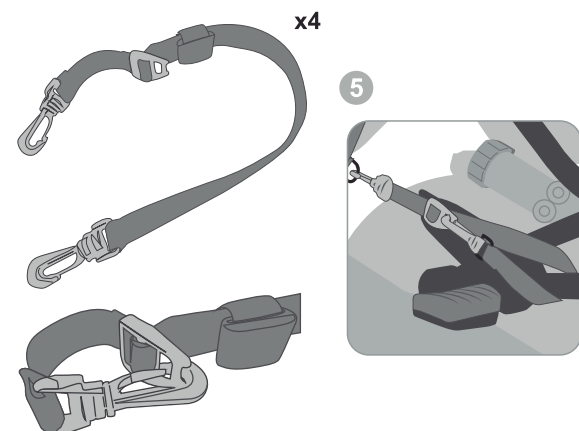
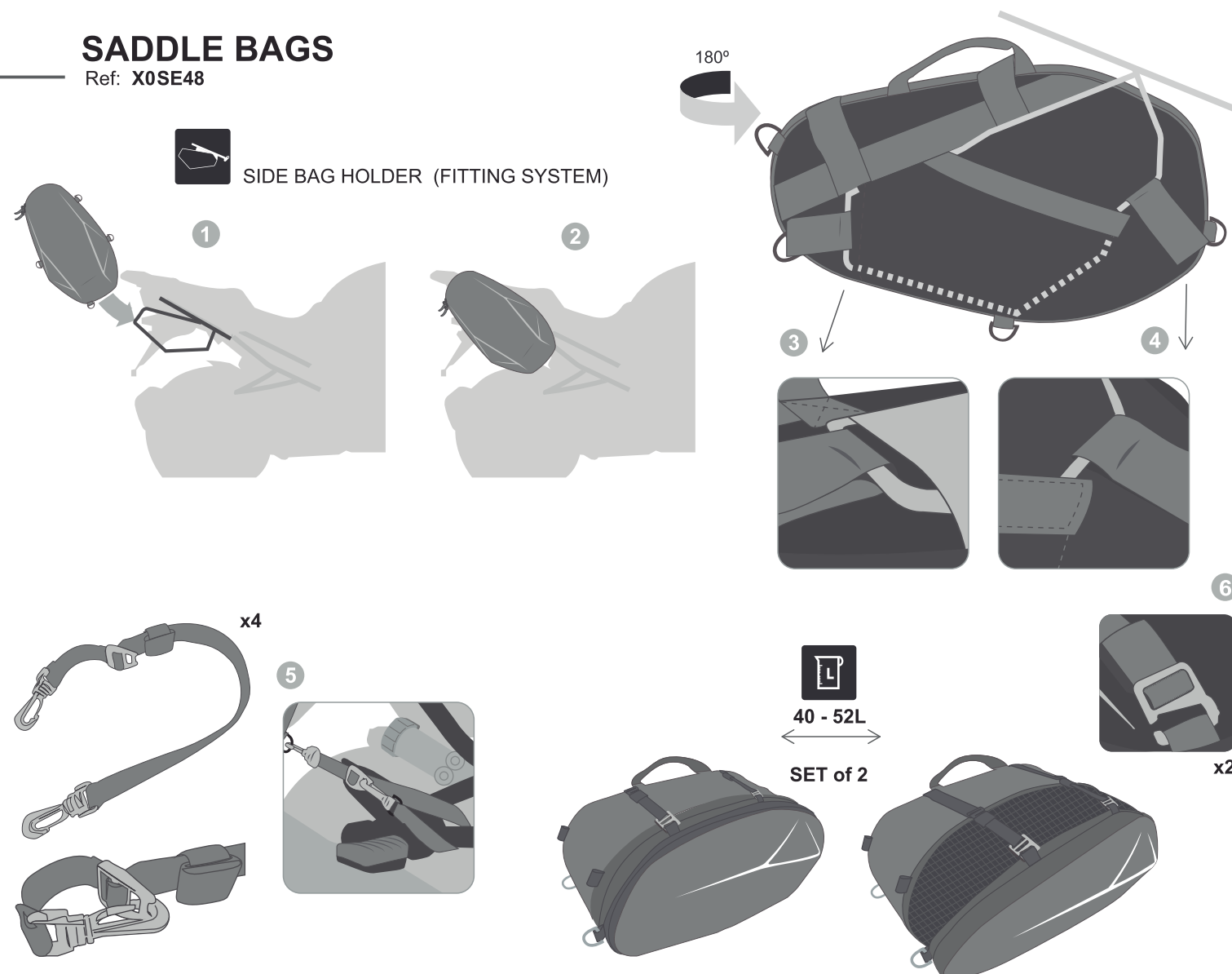


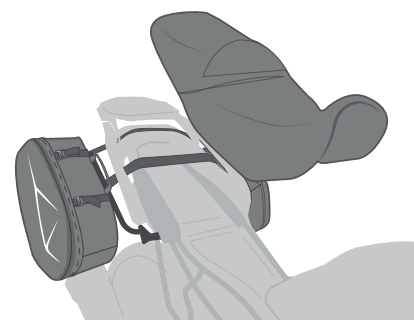
SADDLE BAGS

Ref: X0SE48



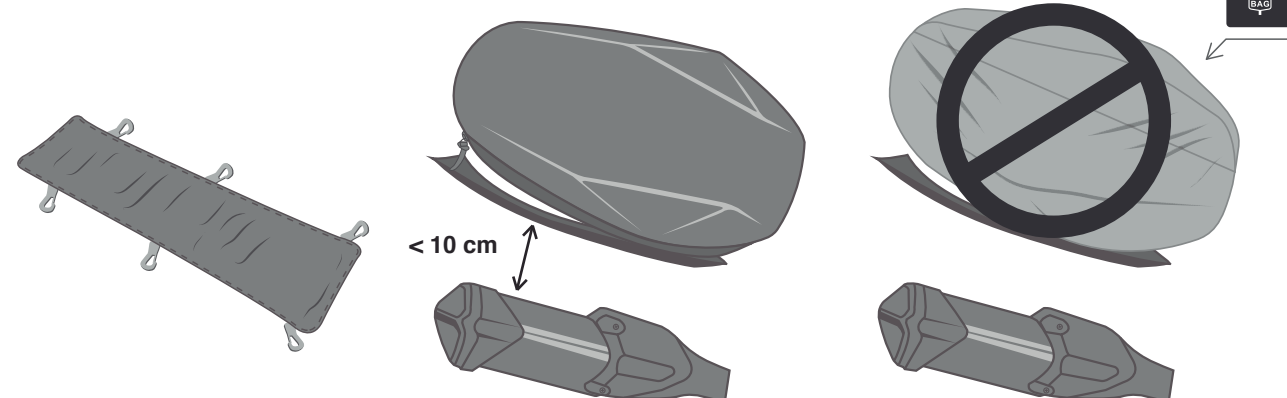
Rain cover

FIXATION WITHOUT SIDE BAG HOLDER



INSULATION THERMAL PAD - ACCESSORY -

Ref: X1SB97



Ref: X0SE04
Name: Tank Bag 3L

| | |
|--|------------------------|
| | Semi rigid |
| | Capacity 3L |
| | Water resistant zipper |
| | Universal base tank |
| | Inner pockets |
| | Reflective |
| | Rain cover |
| | Outlet for USB charger |
| | Mobile phone holder |
| | Touch screen |

Ref: X0SE22
Name: Tank Bag 16L

| | |
|--|------------------------|
| | Semi rigid |
| | Capacity 16L - 21L |
| | Water resistant zipper |
| | Universal base tank |
| | Inner pockets |
| | Reflective |
| | Rain cover |
| | Outlet for USB charger |
| | Compression straps |
| | Expandable |
| | Shoulder strap |

Ref: X0SE83
Name: Backpack with laptop protection

| | |
|--|------------------------------------|
| | Semi rigid |
| | Capacity 17L |
| | Water resistant zipper |
| | Helmet holder |
| | Inner pockets / laptop compartment |
| | Reflective |

Ref: X0SE48
Name: Saddle Bags

| | |
|--|------------------------|
| | Semi rigid |
| | Capacity 40L - 52L |
| | Water resistant zipper |
| | Expandable |
| | Compression straps |
| | Reflective |
| | Rain cover |
| | Inner reinforcement |

⚠ WARNING

Clean the tank of the bike before placing the Universal Base Tank to avoid scratches in the paint.

Make sure the bag and its accessories are properly assembled.

When cleaning the bags use a damp cloth with neutral soap, always avoid using solvents or chemical products.

Prolonged exposure to weather might discolor fabrics and wear away plastic components.

Waterproof zippers and rain covers do not guarantee that the bag is fully water resistant.

Use zippers with care. To open the bags slide zip all the way without forcing.

The maximum speed of the motorcycle with the bag must not exceed 120 Km/h / 74 Mph (this may vary depending on the legislation of each country).

Load capacity. Tank bag SE-22: 2 Kg (4 Lb) max. Saddle bags SE-48: 2 Kg (4 Lb) / each max. Backpack SE-83: 3 Kg (6 Lb) max.

SHAD will not hold responsibility for damages caused by an incorrect assembly.

⚠ PRECAUCIÓN

Limpiar el depósito de la moto antes de posicionar la "Universal Base Tank" para evitar rayadas en la pintura.

Asegurarse que la bolsa y todos sus accesorios están correctamente montados.

Si requiere limpiar las bolsas utilice un paño húmedo con jabón neutro, nunca utilice disolventes o productos químicos.

La exposición prolongada a la intemperie puede ocasionar cambios en color de tejidos y desgaste de componentes plásticos.

Las cremalleras impermeables y los forros de lluvia no garantizan completa impermeabilidad de la bolsa.

Utilizar las cremalleras con cuidado, para abrir, deslizarlas hasta el final sin forzarlas.

Capacidad de carga. Bolsa de depósito SE-22: 2Kg Máx. Alforjas laterales SE-48: 2 Kg cada una Máx. Mochila SE-83: 3 Kg Máx.

La velocidad de la moto con una bolsa tiene que ser de máximo 120 Km/h / 74 Mph (según legislación de cada país).

SHAD no se hará responsable de los daños causados por un incorrecto montaje.

⚠ PRECAUTIONS

Nettoyer le réservoir de la moto avant de mettre la "Universal Base Tank" pour éviter des rayures des peintures.

S'assurer que le sac et tous ses accessoires soient correctement montés.

Si vous souhaitez laver le sac, utilisez de l'eau avec un savon neutre, ne jamais utiliser des dissolvants ou des produits chimiques.

Une exposition prolongée aux éléments peut entraîner des changements de couleur dans les tissus et l'usure des composants en plastique.

Zips imperméables et les housses de pluie ne garantissent pas l'imperméabilité complète du sac.

Soigneusement à l'aide des fermetures éclair pour ouvrir les sacs faites-les glisser tout le chemin sans forcer.

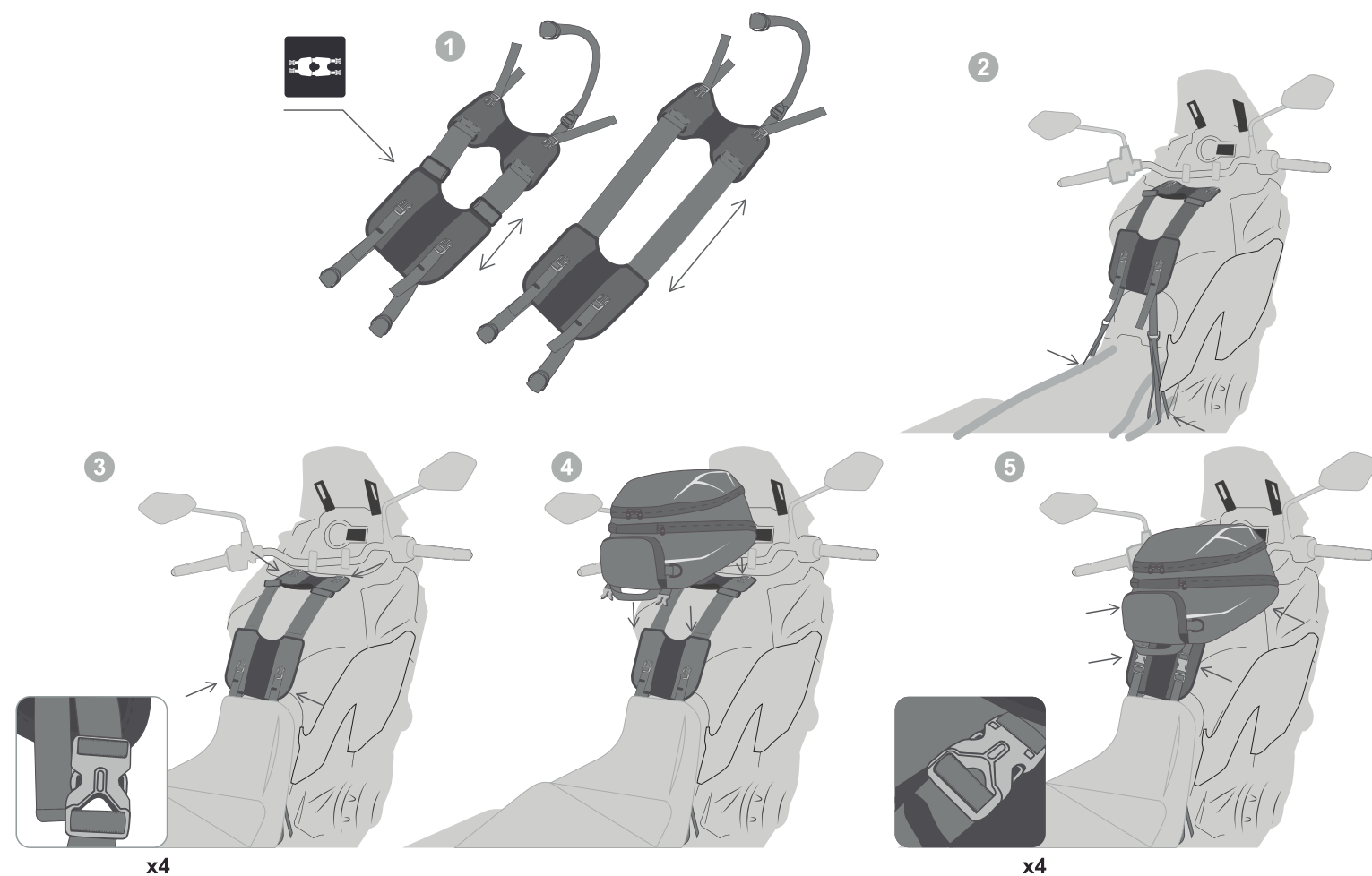
La vitesse maximum avec la valise pleine doit être de 120 Km/h / 74 mph (selon la législation de chaque pays).

La capacité de charge. Sac de réservoir SE-22: 2Kg (4Lb)max. Side Sacoques SE-48: 2Kg (4Lb)chaque max. Sac à dos SE-83: 3 Kg (4Lb) max.

SHAD ne se portera pas responsable des dommages causés par un montage incorrect.

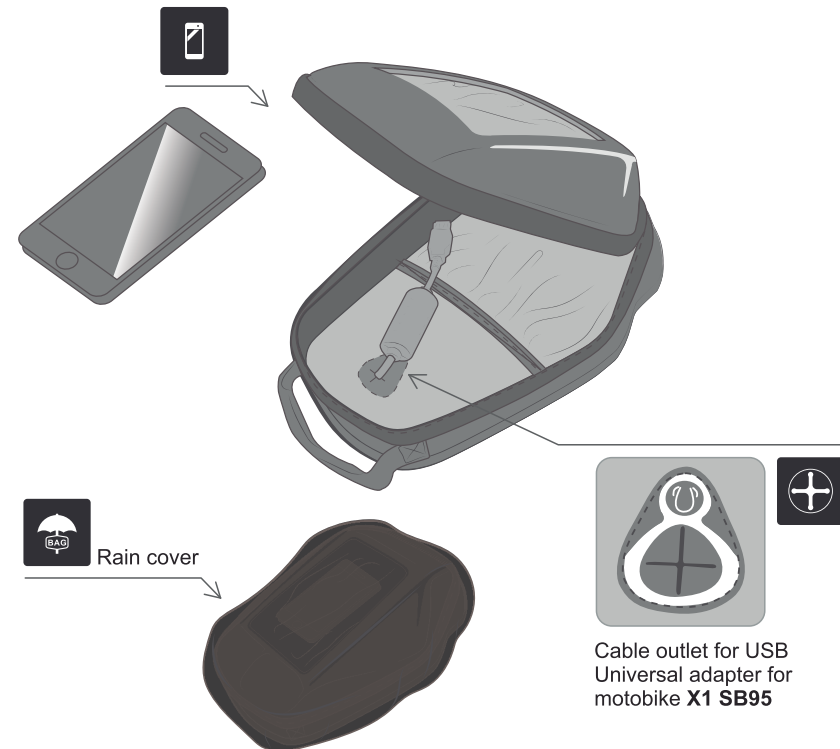
UNIVERSAL TANK BASE

Included in Tank bags E-04. E-22

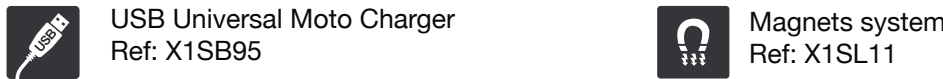


SMALL TANK BAG E-04

Ref: X0SE04

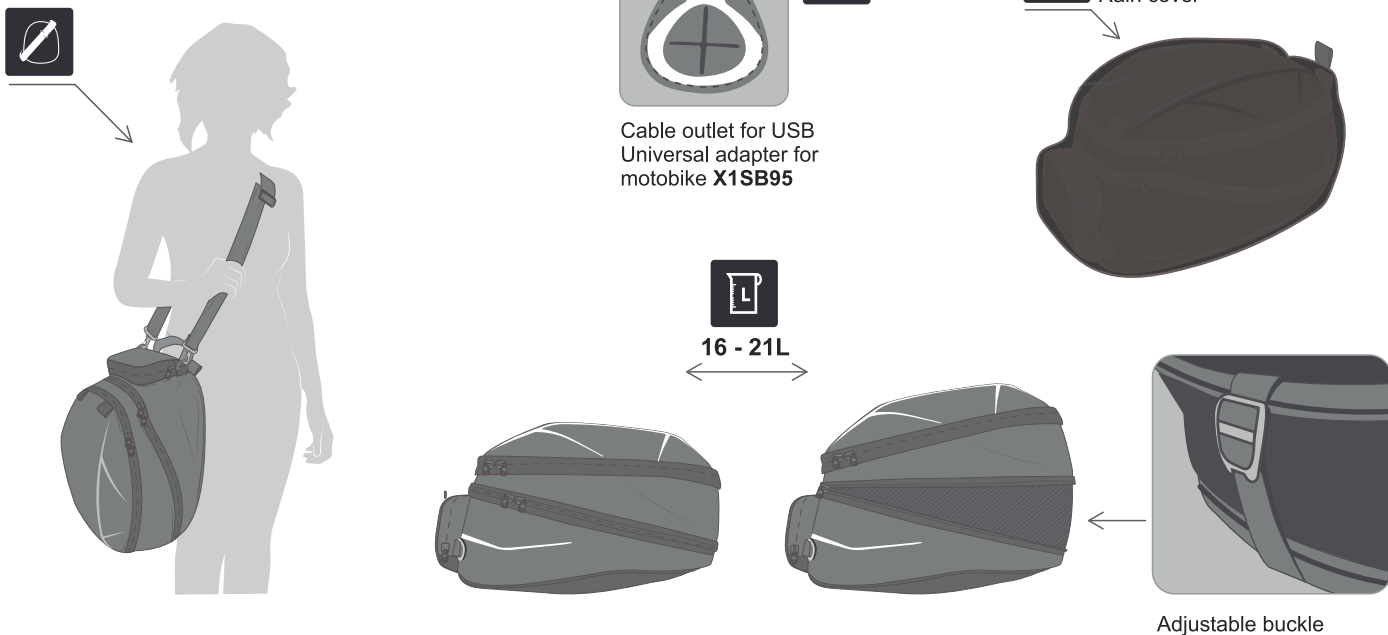


OPTIONAL ACCESSORIES - SOLD SEPARATELY

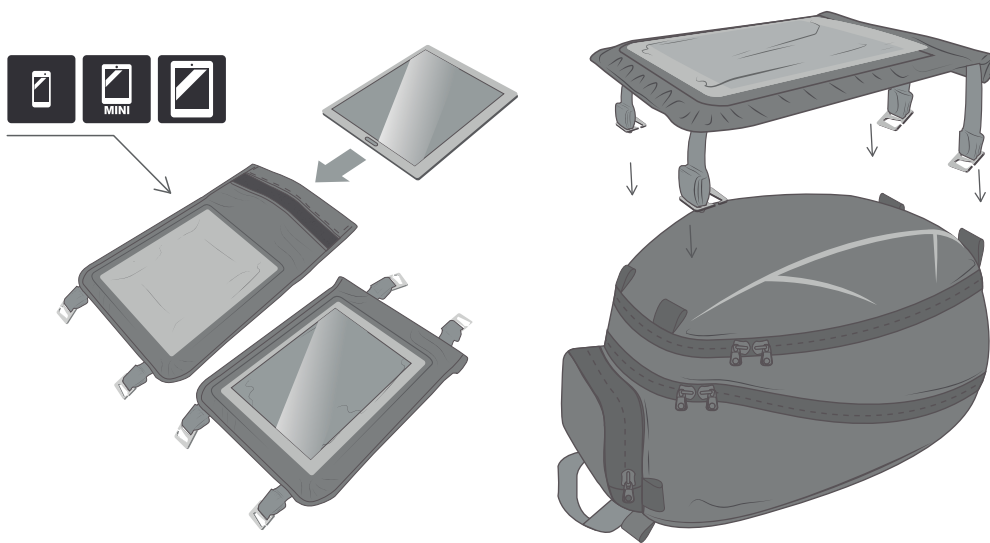
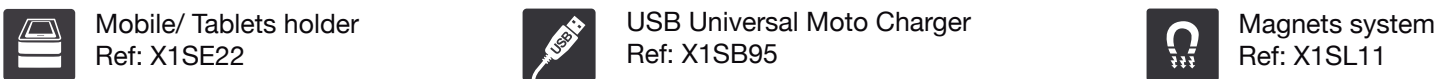


TANK BAG E-22

Ref: X0SE22



OPTIONAL ACCESSORIES - SOLD SEPARATELY



BACKPACK E-83

with laptop protection
Ref: X0SE83

